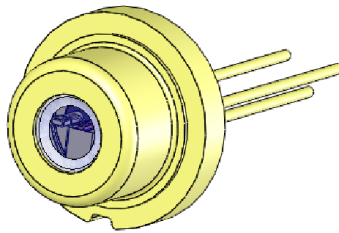
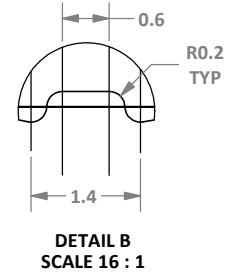
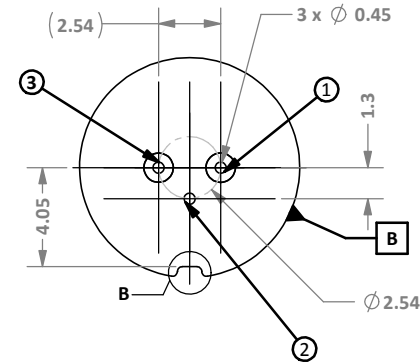


REVISIONS			
REV.	DESCRIPTION	DATE	APPROVED
1	INITIAL RELEASE	8/3/2015	GAP
A	ECN RELEASE	8/6/2015	GAP
B	ADDED DEVICE FROM WINDOW DIMENSIONS	4/21/2016	MCS
C	DCN 1196: Corrected Cap Dimensions	11/18/2016	BP



Notes:

1. Mechanical Reference only. See configurator for "M9" part numbers. Dimensions are reference only.
2. Window is AR coated.
3. Package is hermetically sealed.
4. Connector pins are plated gold over nickel. Solder at MAX 250° C for ≤5s is recommended.

ELECTRICAL PIN-OUT (Single-Mode, SEE NOTE 4)						
PIN	-DxP	-SxP	-DxD	-SxD	-Sx0	-Dx0
1	LASER CATHODE (-)	LASER ANODE (+)	LASER CATHODE (-)	LASER ANODE (+)	LASER ANODE (+)	LASER CATHODE (-)
2	LASER ANODE (+) PD CATHODE (-)	LASER CATHODE (-) PD CATHODE (-)	LASER ANODE (+) PD ANODE (+)	LASER CATHODE (-) PD ANODE (+)	LASER CATHODE (-)	LASER ANODE (+)
3	PD ANODE (+)	PD ANODE (+)	PD CATHODE (-)	PD CATHODE (-)	-	-

ELECTRICAL PIN-OUT (Multi-Mode, SEE NOTE 4)			
PIN	-xxP	-xxD	-xx0
1	LASER CATHODE (-)	LASER CATHODE (-)	LASER CATHODE (-)
2	LASER ANODE (+) PD CATHODE (-)	LASER ANODE (+) PD ANODE (+)	LASER ANODE (+)
3	PD ANODE (+)	PD CATHODE (-)	-

DIMENSIONS mm [in]	
UNLESS OTHERWISE SPECIFIED TOLERANCES ARE:	
ANGULAR:	± 30 MINUTES
X	± .25 [.010]
X.X	± .13 [.005]
X.XX	± .05 [.002]
X.XXX	± .025 [.001]
INTERPRET GEOMETRIC TOLERANCING PER: ASME Y14.5M-1994	
MATERIAL	NA
FINISH (UNLESS OTHERWISE SPECIFIED)	
DO NOT SCALE DRAWING	

PROPRIETARY AND CONFIDENTIAL
THE INFORMATION CONTAINED IN THIS DRAWING IS THE SOLE PROPERTY OF SHEAUMANN LASER, INC. ANY REPRODUCTION IN PART OR AS A WHOLE WITHOUT THE WRITTEN PERMISSION OF SHEAUMANN LASER, INC. IS PROHIBITED.

NAME	DATE
GAP	8/3/2015
CHECKED	
ENG APPR.	~
MFG APPR.	~
Q.A.	~

SHEAUMANN
TITLE:

THIRD ANGLE PROJECTION



M9

SIZE	DWG. NO.	REV
B	RDW 840015	C
SCALE: 5:1		SHEET 1 OF 1